

Liegenschaft

WBG Bantiger, Siedlung Rüti, 3072 Ostermundigen

Haus

Block A1 - A4, Rütiweg 105/107, 111/113, 117/119, 123/125

Zimmer

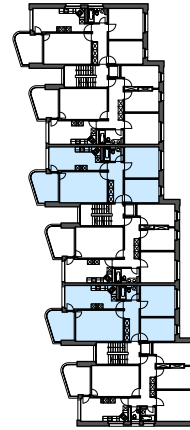
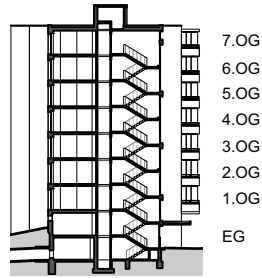
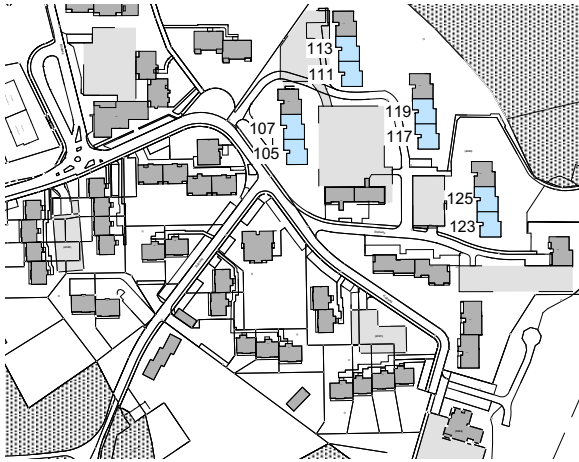
3.5

Lage

Erdgeschoss - 7. Obergeschoss

Fläche (NWF)

78.7m² (exkl. Balkon)



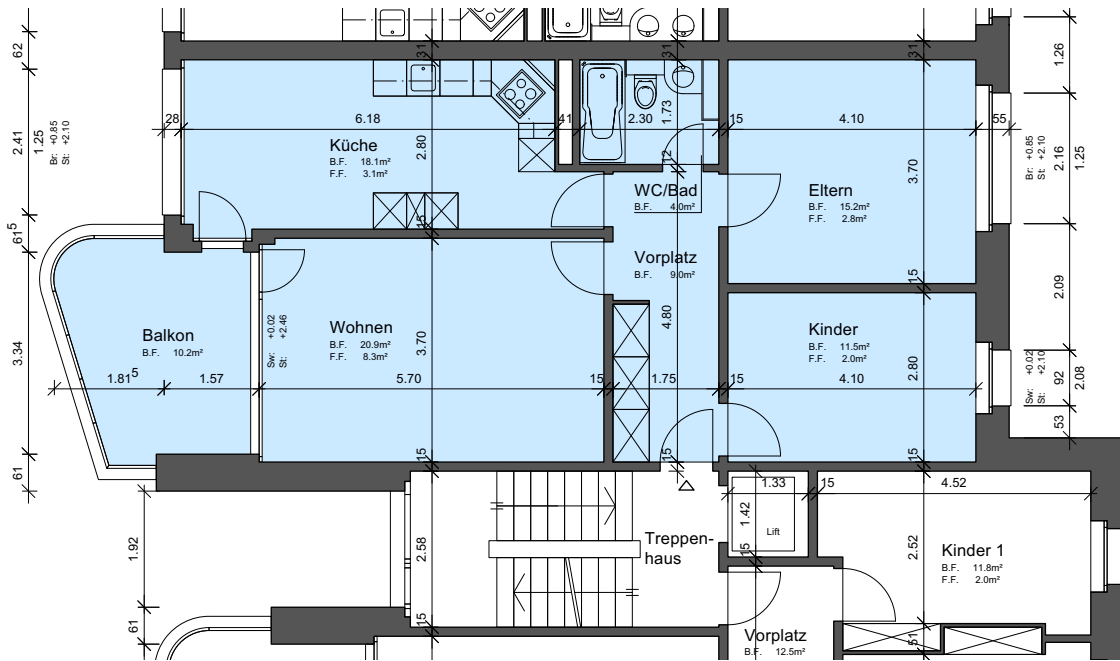
Situation

Schnitt

Grundriss-Übersicht

Grundriss

Masstab 1:125



Legende:

- Br: = Brüstung
- Sw: = Schwelle
- St: = Sturz
- F.F. = Fensterfläche
- B.F. = Bodenfläche
- HK = Heizkörper

0 1 2 3 4 5m

