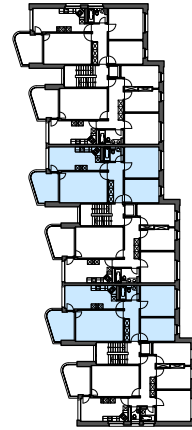
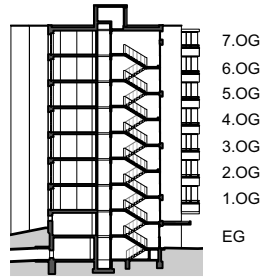
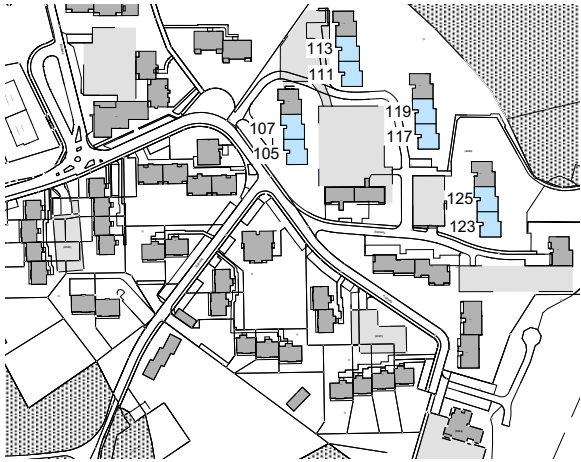


Liegenschaft	WBG Bantiger, Siedlung Rüti, 3072 Ostermundigen
Haus	Block A1 - A4, Rütiweg 105/107, 111/113, 117/119, 123/125
Zimmer	3.5
Lage	Erdgeschoss - 7. Obergeschoss
Fläche (NWF)	78.7m ² (exkl. Balkon)



Situation

Schnitt

Grundriss-Übersicht

Grundriss
 Masstab 1:125

