

Liegenschaft

WBG Bantiger, Siedlung Rüti, 3072 Ostermundigen

Haus

Block A1 - A4, Rütiweg 107/109, 113/115, 119/121, 125/127

Zimmer

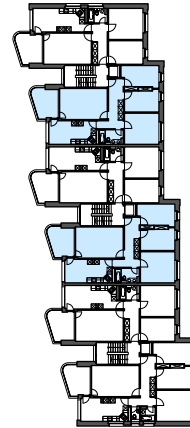
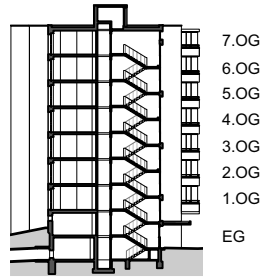
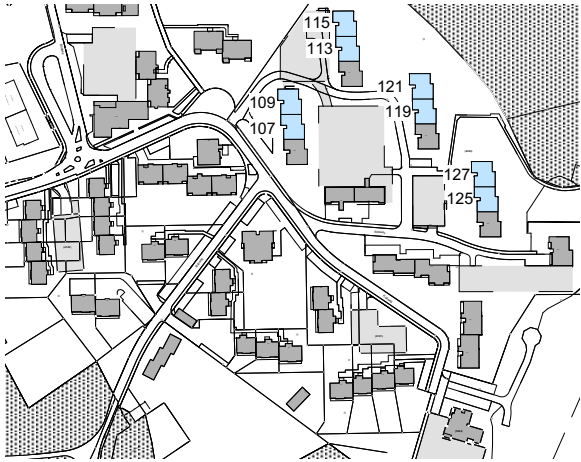
4.5

Lage

Erdgeschoss - 7. Obergeschoss

Fläche (NWF)

92.3m<sup>2</sup> (exkl. Balkon)



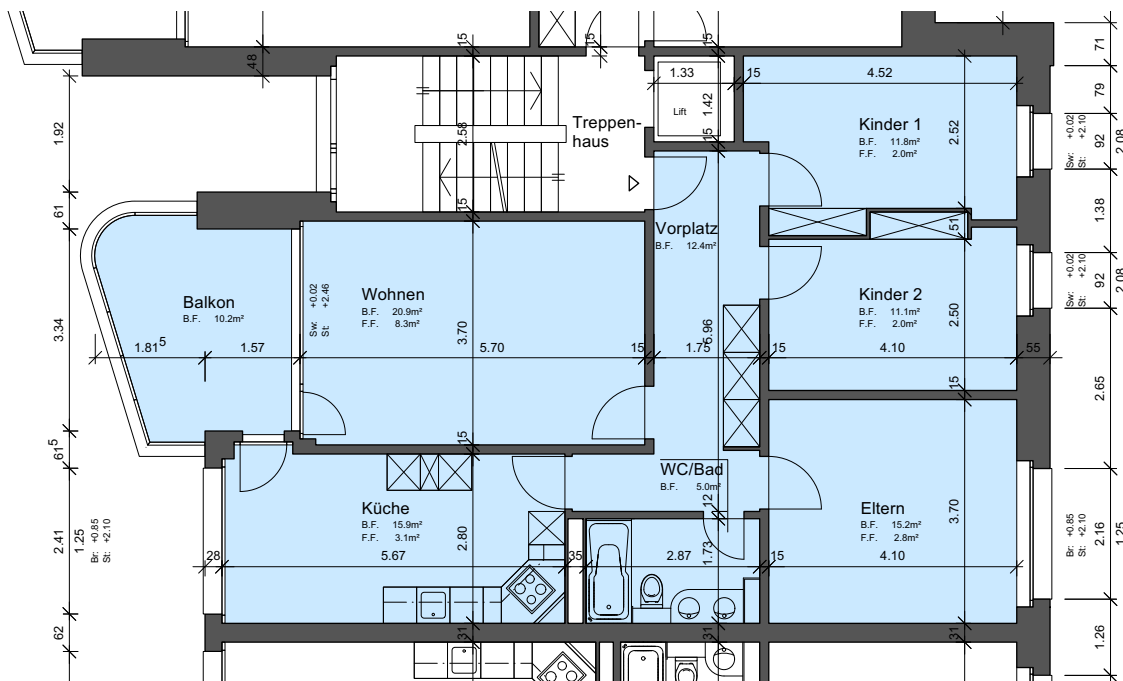
Situation

Schnitt

Grundriss-Übersicht

Grundriss

Masstab 1:125



Legende:

- Br: = Brüstung
- Sw: = Schwelle
- St: = Sturz
- F.F.: = Fensterfläche
- B.F.: = Bodenfläche
- HK: = Heizkörper

