

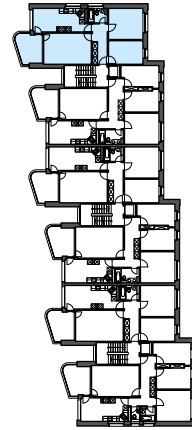
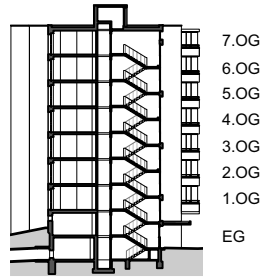
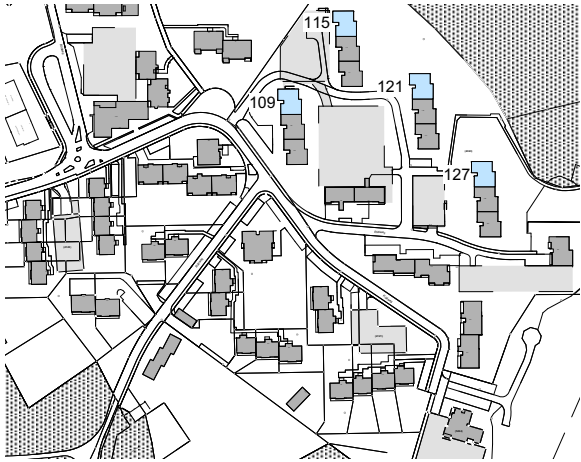
Liegenschaft WBG Bantiger, Siedlung Rüti, 3072 Ostermundigen

Haus Block A1 - A4, Rütiweg 109, 115, 121, 127

Zimmer 3.5

Lage Erdgeschoss - 7. Obergeschoss

Fläche (NWF) 78.7m<sup>2</sup> (exkl. Balkon)

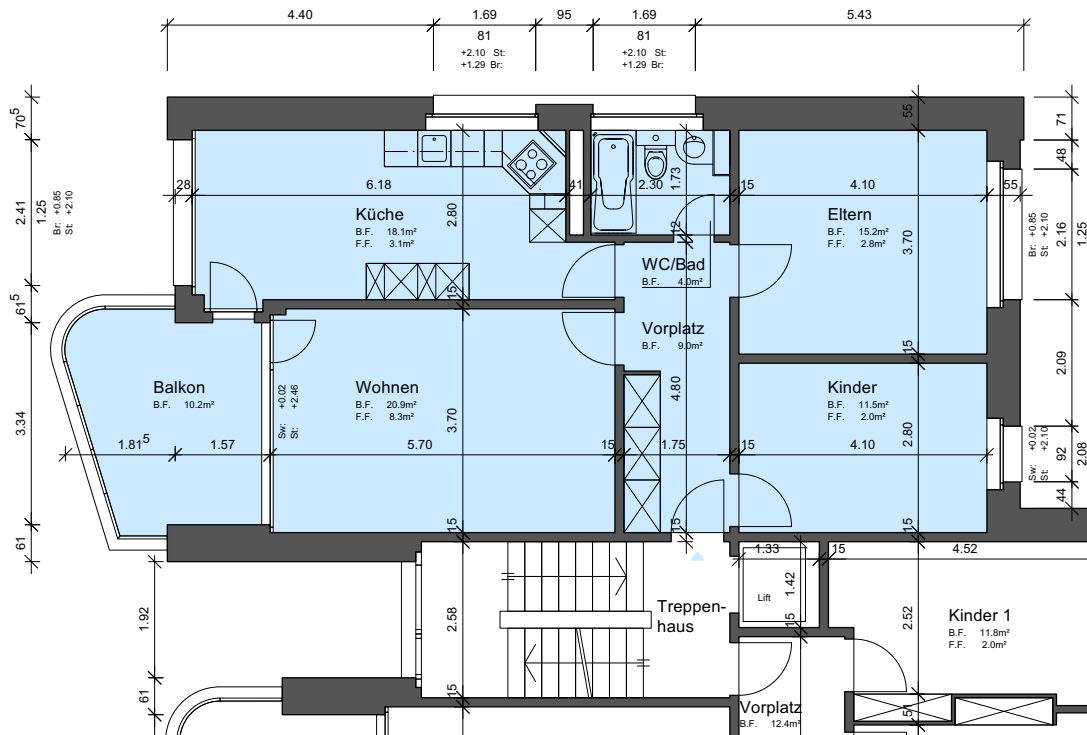


Situation

Schnitt

Grundriss-Übersicht

Grundriss  
Masstab 1:125



- Legende:
- Br: = Brüstung
  - Sw: = Schwelle
  - St: = Sturz
  - F.F.: = Fensterfläche
  - B.F.: = Bodenfläche
  - HK = Heizkörper

