

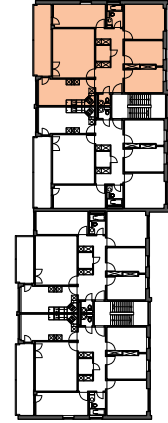
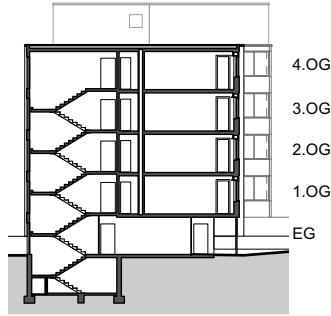
Liegenschaft WBG Bantiger, Siedlung Rüti, 3072 Ostermundigen

Haus Block B, Rütiweg 135

Zimmer 5.5

Lage 1. Obergeschoss - 4. Obergeschoss

Fläche (NWF) 115.4m<sup>2</sup> (exkl. Balkon)

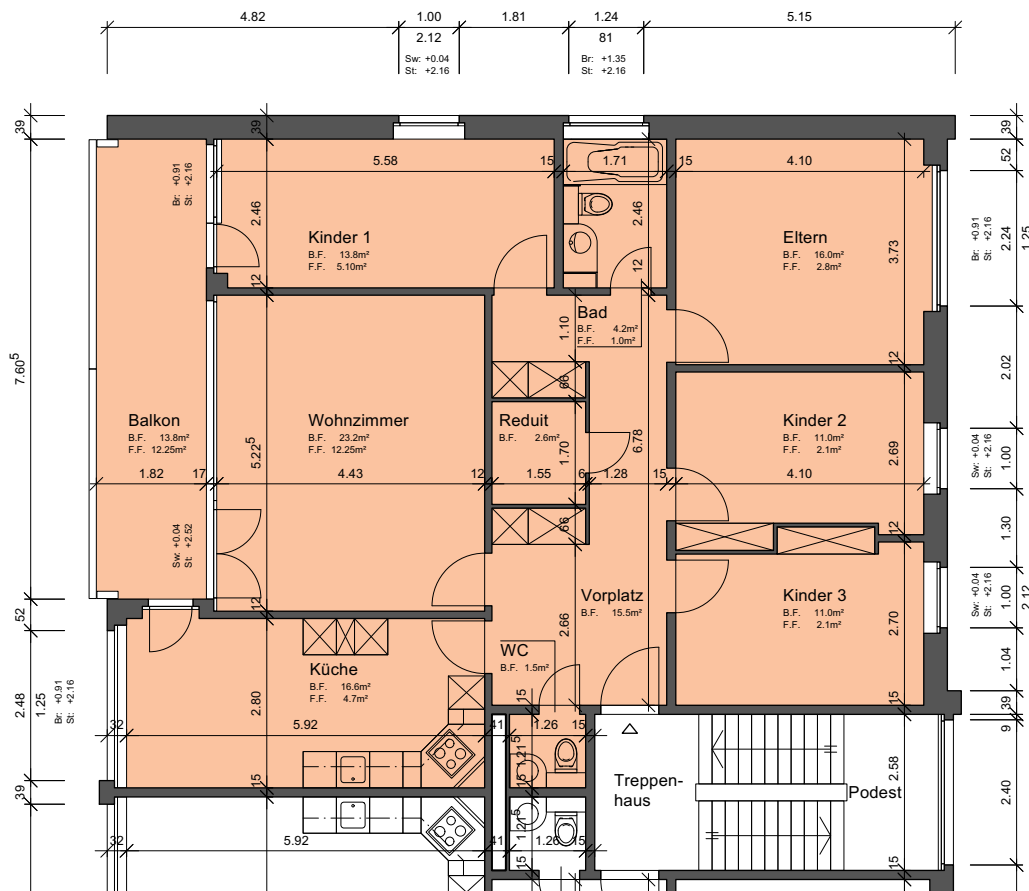


Situation

Schnitt

Grundriss-Übersicht

Grundriss  
Masstab 1:125



- Legende:
- Br: = Brüstung
  - Sw: = Schwelle
  - St: = Sturz
  - F.F. = Fensterfläche
  - B.F. = Bodenfläche
  - HK = Heizkörper

