

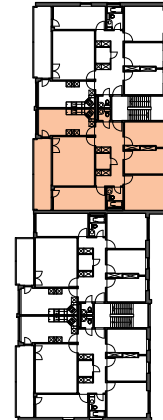
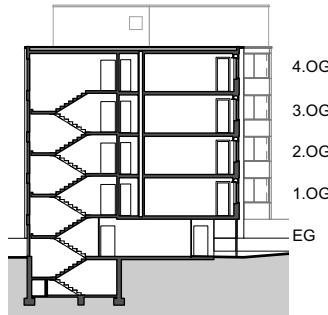
Liegenschaft WBG Bantiger, Siedlung Rüti, 3072 Ostermundigen

Haus Block B, Rütiweg 135

Zimmer 5.5

Lage 1. Obergeschoss - 4. Obergeschoss

Fläche (NWF) 117.6m² (exkl. Balkon)

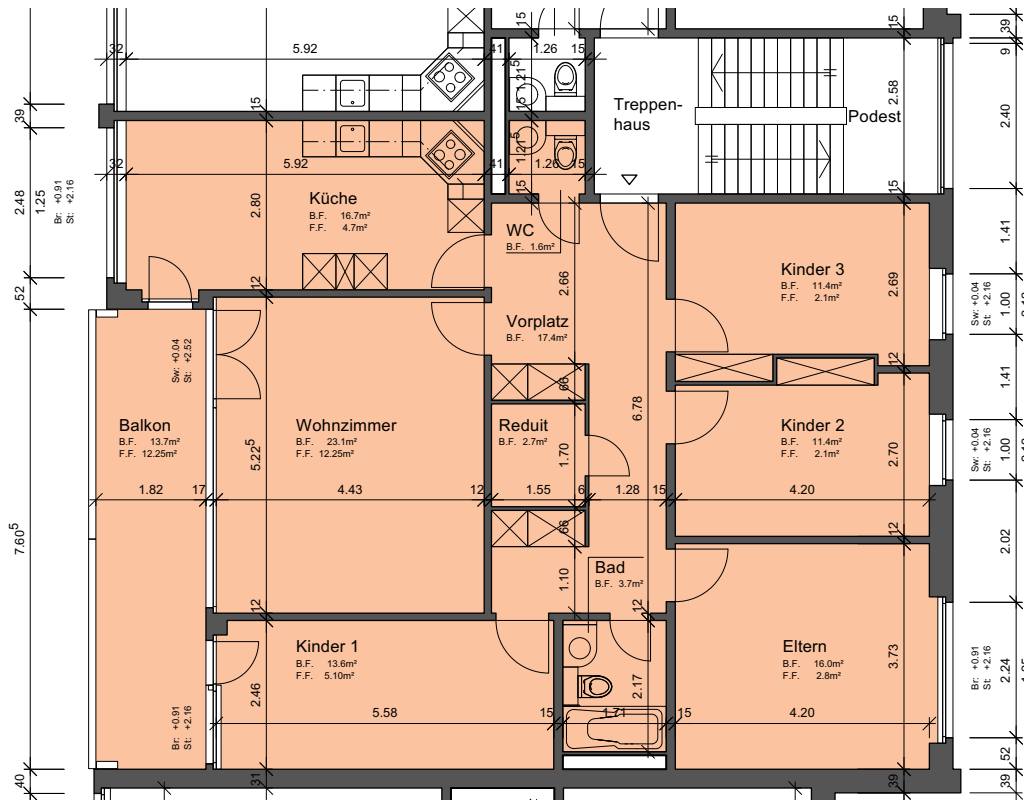


Situation

Schnitt

Grundriss-Übersicht

Grundriss
Masstab 1:125



- Legende:**
- Br: = Brüstung
 - Sw: = Schwelle
 - St: = Sturz
 - F.F. = Fensterfläche
 - B.F. = Bodenfläche
 - HK = Heizkörper

