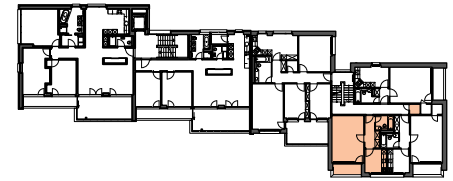
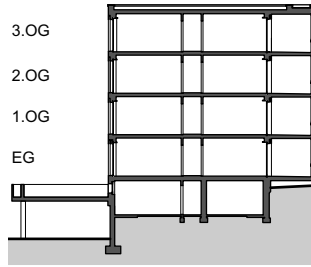
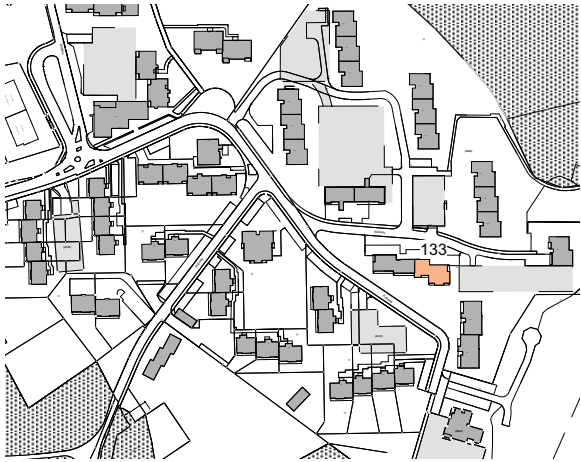
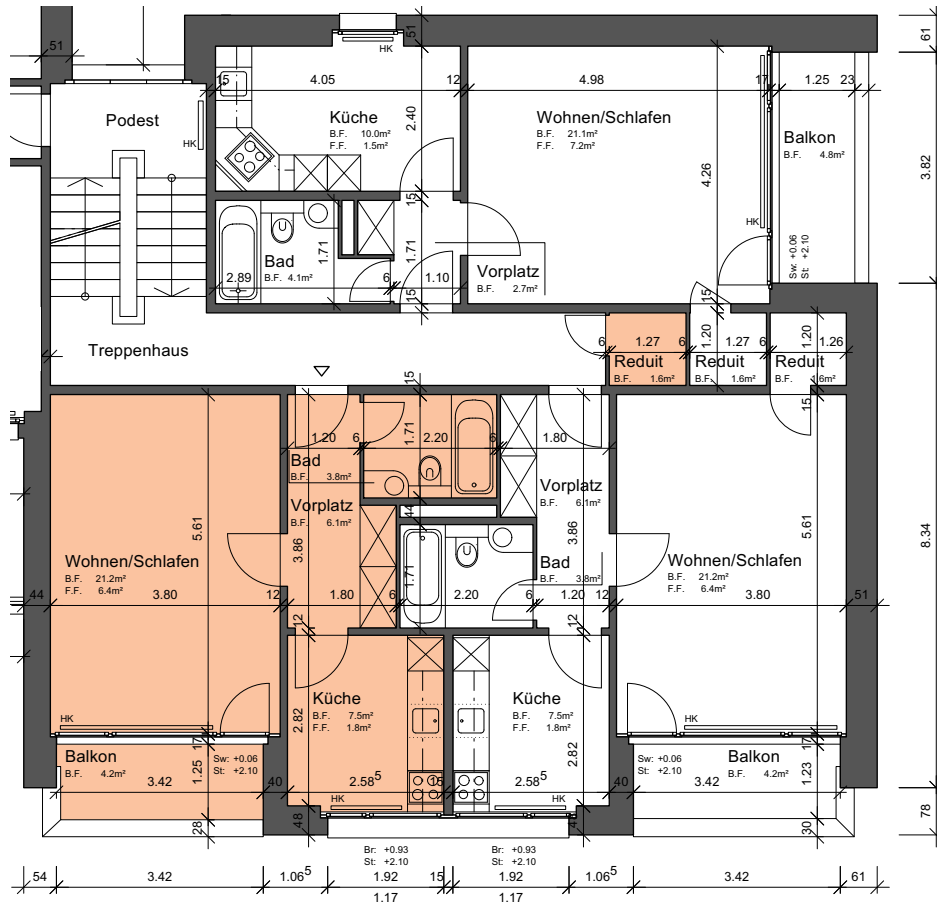


Liegenschaft	WBG Bantiger, Siedlung Rüti, 3072 Ostermundigen
Haus	Block C, Rütiweg 133
Zimmer	1.5
Lage	Erdgeschoss - 3. Obergeschoss
Fläche (NWF)	40.1m <sup>2</sup> (exkl. Balkon)



Situation Schnitt Grundriss-Übersicht

Grundriss  
 Masstab 1:125



- Legende:**
- Br: = Brüstung
  - Sw: = Schwelle
  - St: = Sturz
  - F.F. = Fensterfläche
  - B.F. = Bodenfläche
  - HK = Heizkörper

