

Liegenschaft

WBG Bantiger, Siedlung Rüti, 3072 Ostermundigen

Haus

Block C, Rütiweg 133

Zimmer

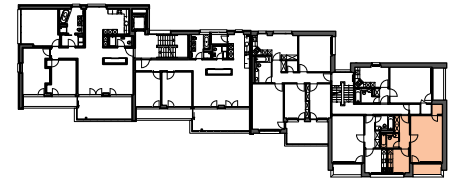
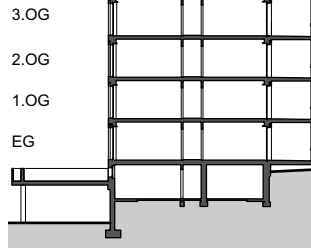
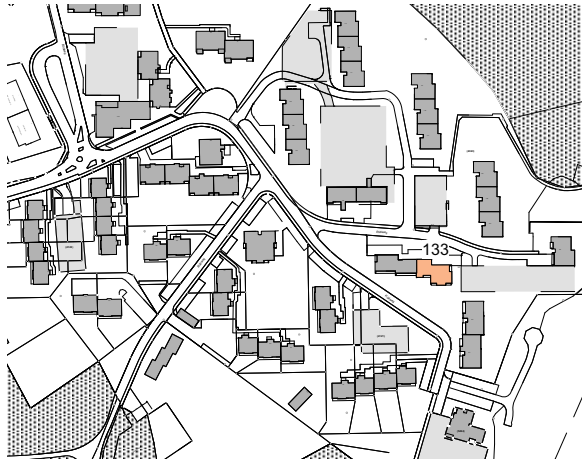
1.5

Lage

Erdgeschoss - 3. Obergeschoss

Fläche (NWF)

40.2m² (exkl. Balkon)



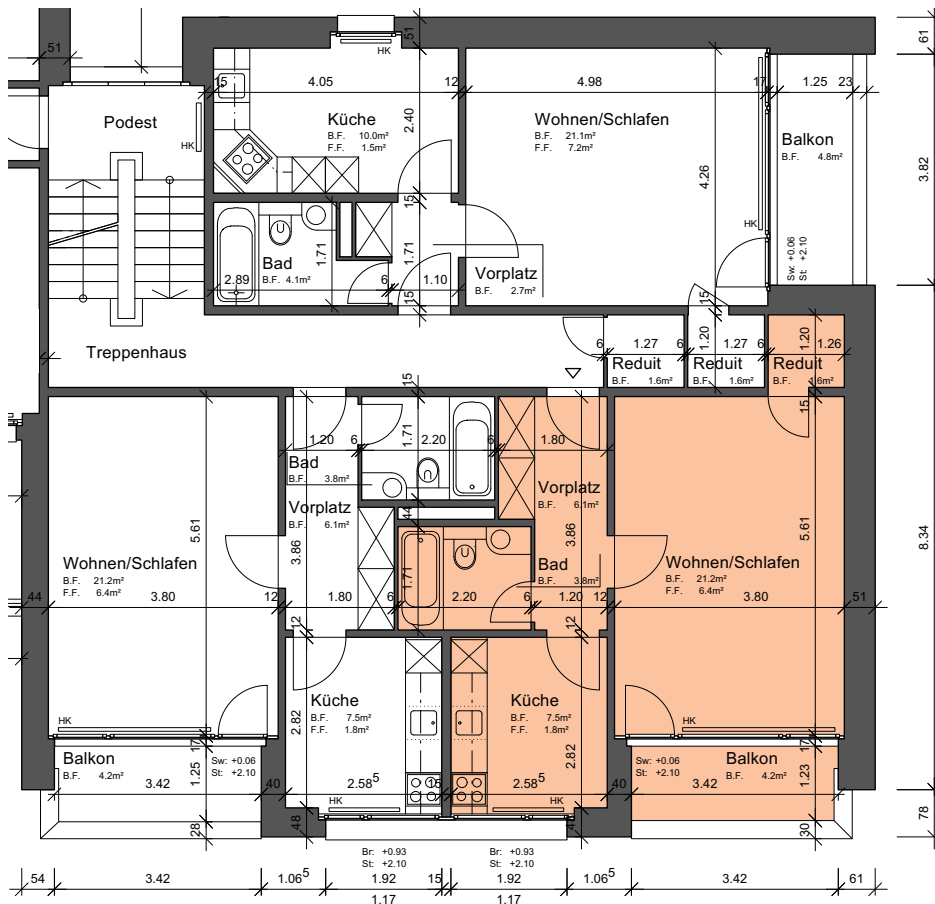
Situation

Schnitt

Grundriss-Übersicht

Grundriss

Masstab 1:125



Legende:

- Br: = Brüstung
- Sw: = Schwelle
- St: = Sturz
- F.F. = Fensterfläche
- B.F. = Bodenfläche
- HK = Heizkörper

