

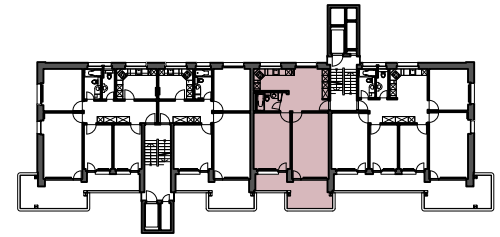
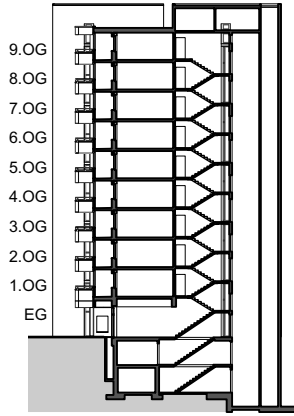
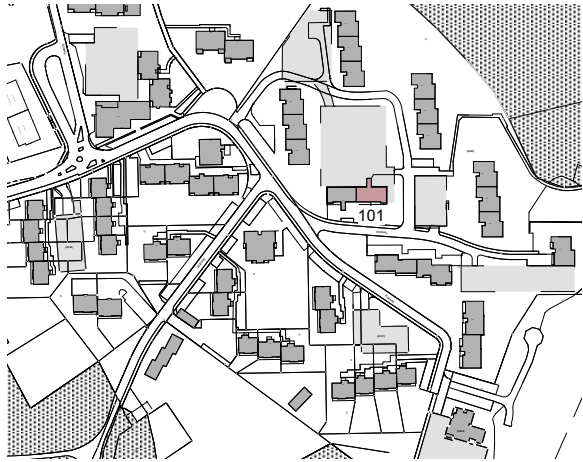
Liegenschaft WBG Bantiger, Siedlung Rüti, 3072 Ostermundigen

Haus Block D, Rütiweg 101

Zimmer 2.5

Lage 1. Obergeschoss - 9. Obergeschoss

Fläche (NWF) 65.4m² (exkl. Balkon)

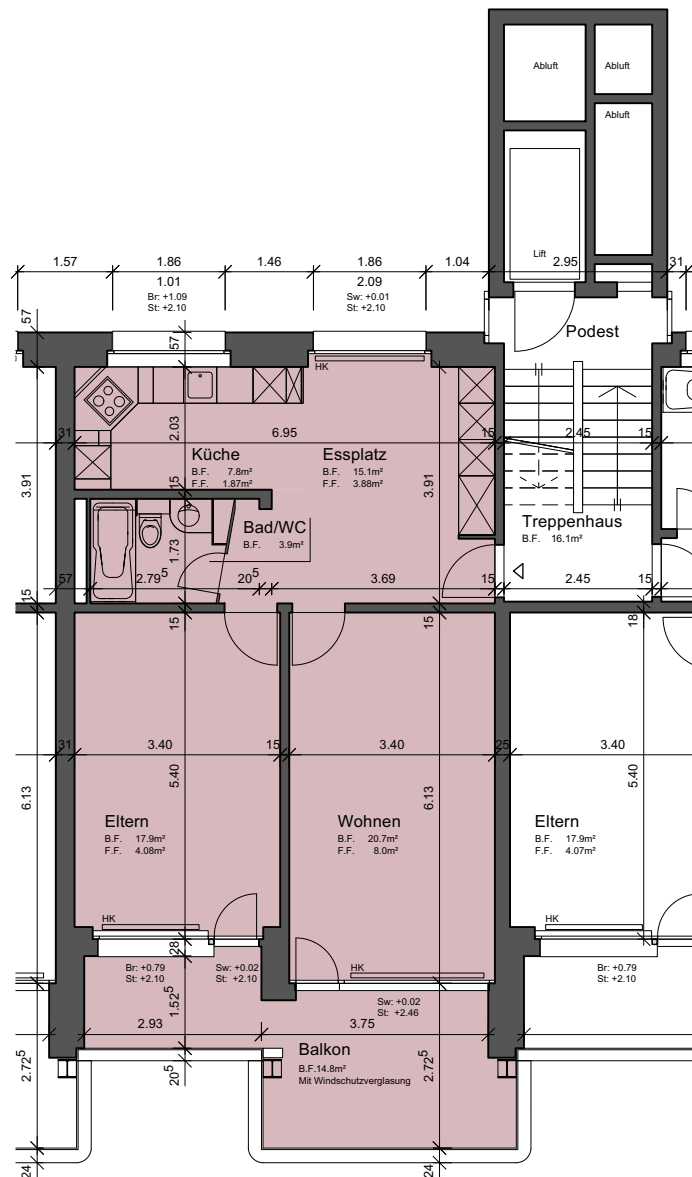


Situation

Schnitt

Grundriss-Übersicht

Grundriss
Masstab 1:125



- Legende:
- Br: = Brüstung
 - Sw: = Schwelle
 - St: = Sturz
 - F.F.: = Fensterfläche
 - B.F.: = Bodenfläche
 - HK = Heizkörper

