

Liegenschaft

WBG Bantiger, Siedlung Rüti, 3072 Ostermündigen

Haus

Block E, Rütiweg 129

Zimmer

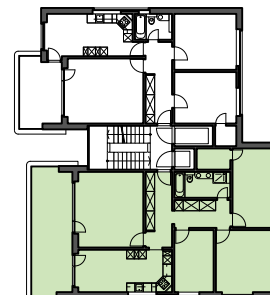
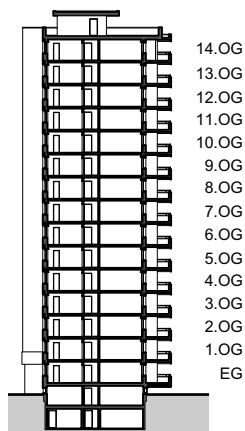
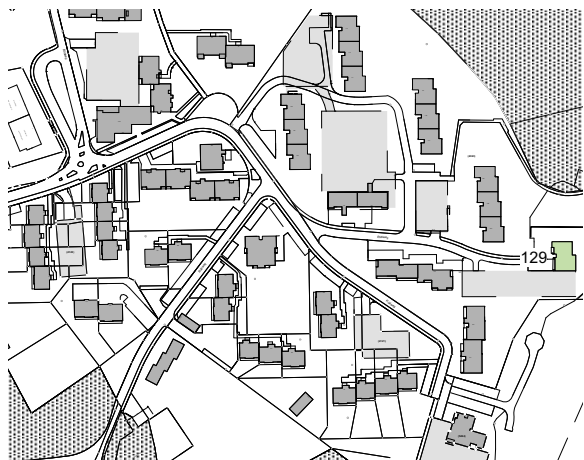
4.5

Lage

1.Obergeschoss - 14. Obergeschoss

Fläche (NWF)

106.1m<sup>2</sup> (exkl. Balkon)



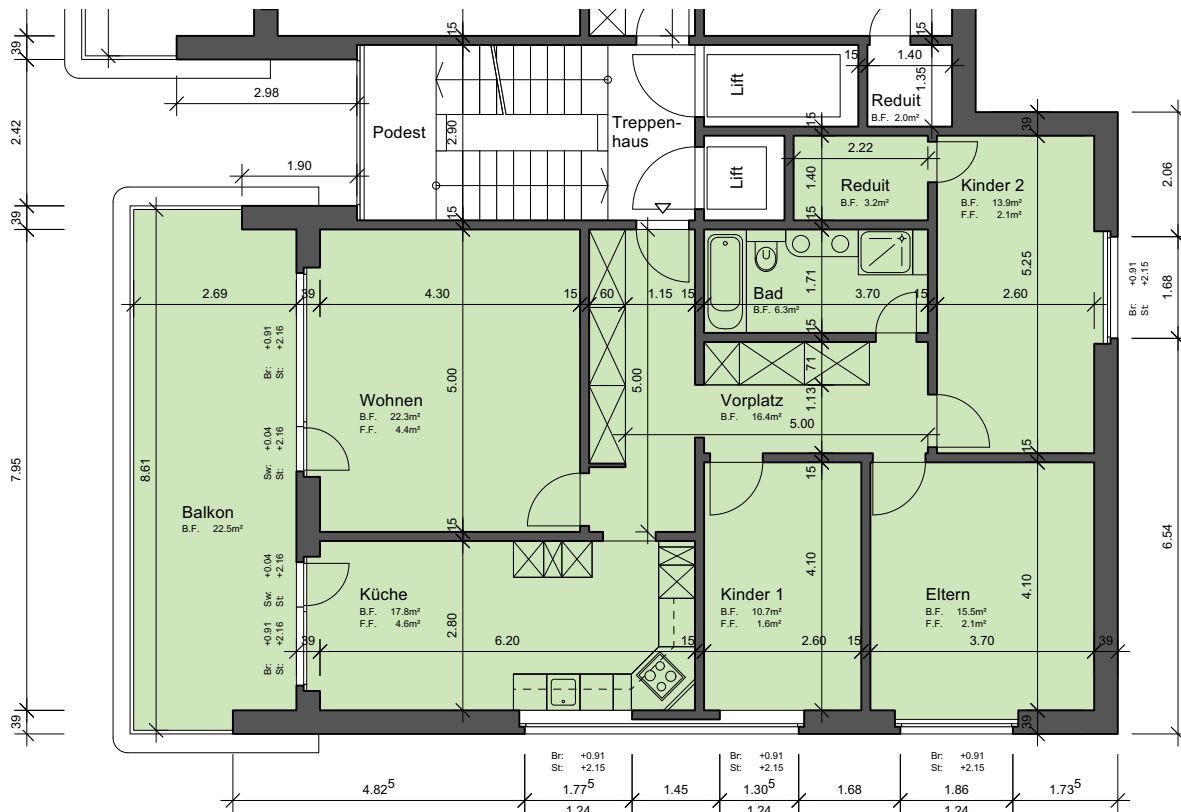
Situation

Schnitt

Grundriss-Übersicht

Grundriss

Masstab 1:125



Legende:

- Br: = Brüstung
- Sw: = Schwelle
- St: = Sturz
- F.F. = Fensterfläche
- B.F. = Bodenfläche
- HK = Heizkörper

