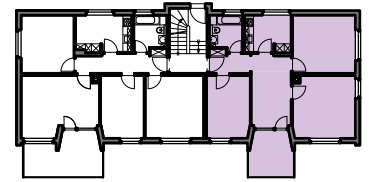
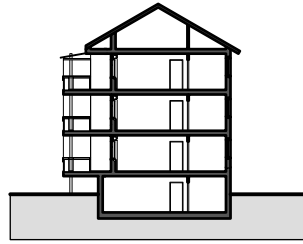
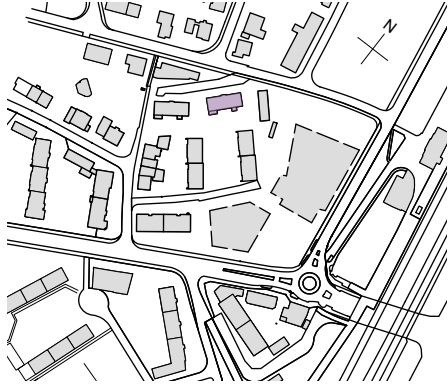


Liegenschaft	WBG Bantiger, Siedlung Waldeck, 3072 Ostermündigen
Haus	Breiteweg 34 - Ost
Zimmer	3.5 Zimmer
Lage	Hochparterre - 2. Obergeschoss
Fläche (NWF)	74.6 m <sup>2</sup> (exkl. Balkon)

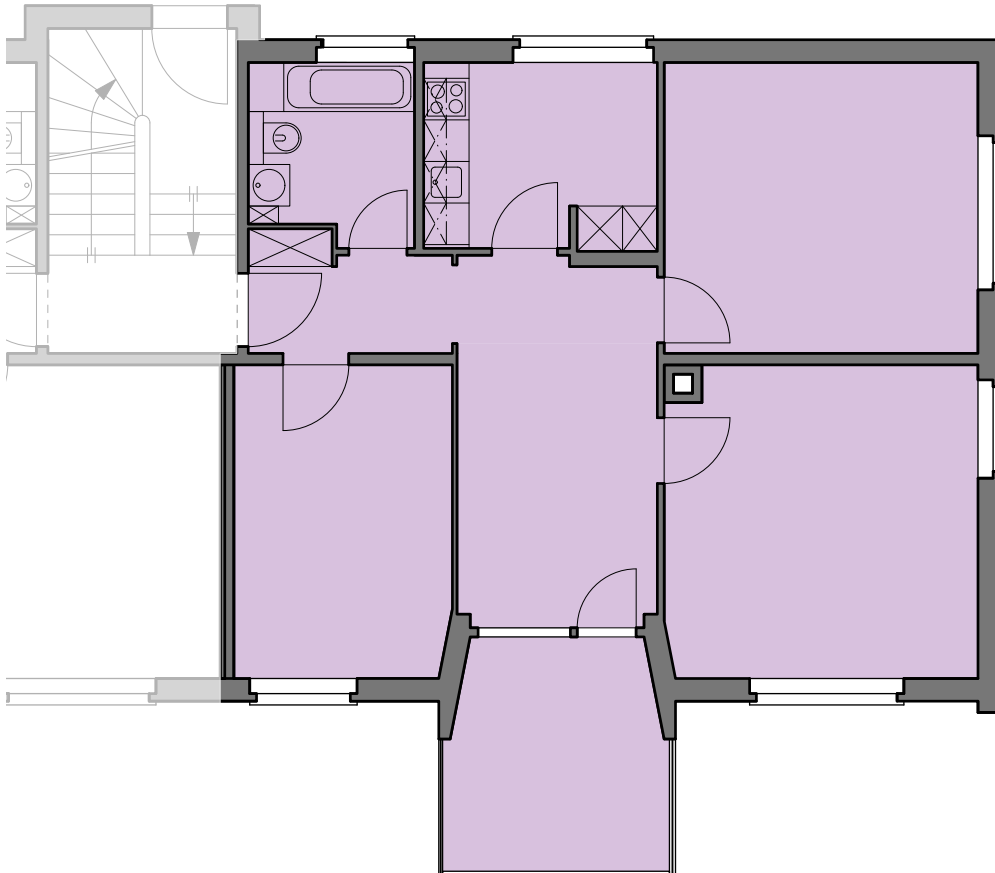


Situation

Schnitt

Grundriss-Übersicht

Grundriss  
 Masstab 1:100



- Legende:
- Br: = Brüstung
  - Sw: = Schwelle
  - St: = Sturz
  - F.F. = Fensterfläche
  - B.F. = Bodenfläche

0 1 2 3 4 5m

