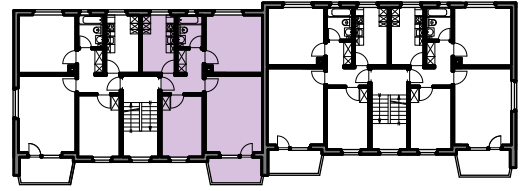
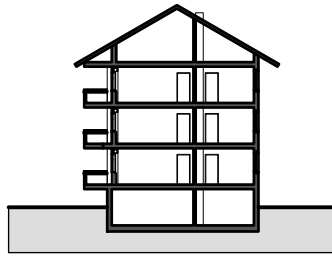
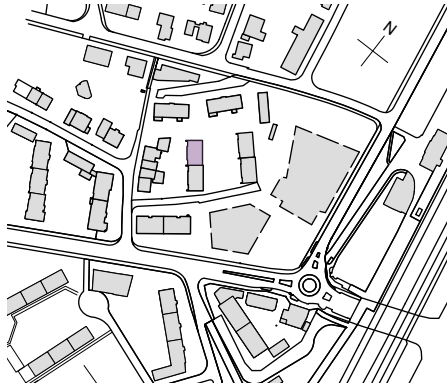


| | |
|--------------|--|
| Liegenschaft | WBG Bantiger, Siedlung Waldeck, 3072 Ostermundigen |
| Haus | Waldeckstrasse 33 - Süd |
| Zimmer | 3 Zimmer |
| Lage | Hochparterre - 2. Obergeschoss |
| Fläche (NWF) | 64.7 m ² (exkl. Balkon) |

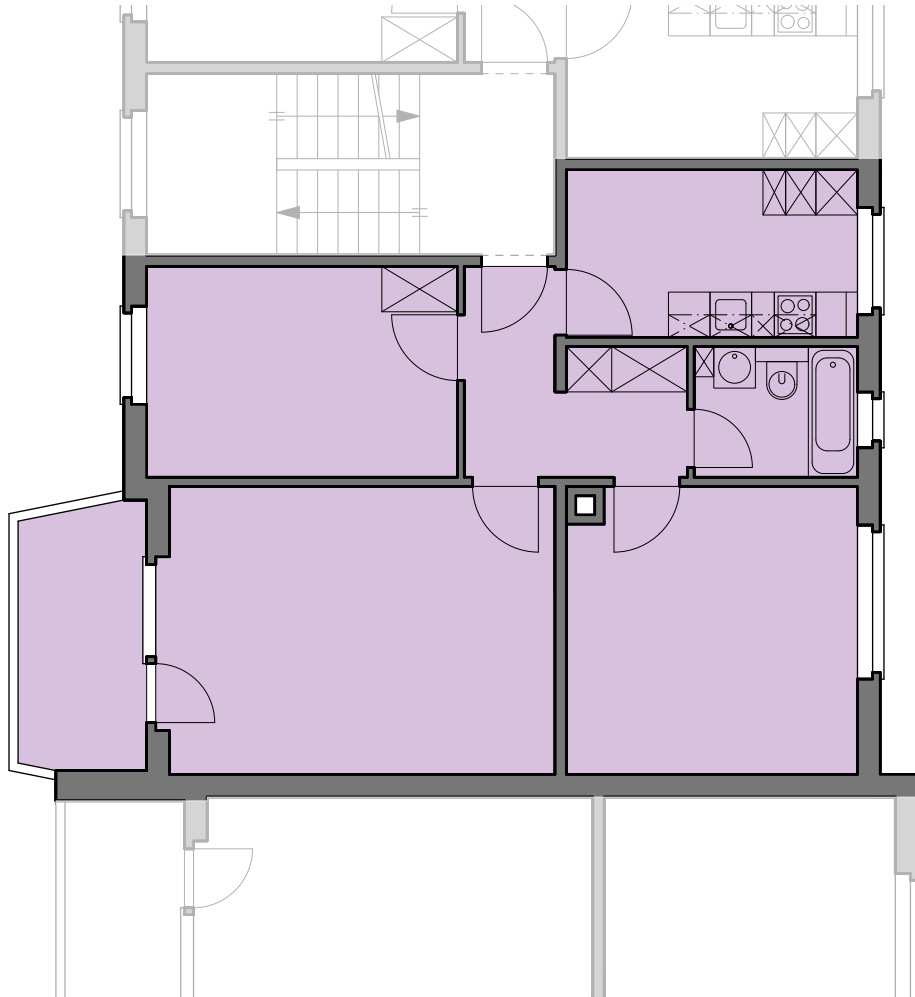


Situation

Schnitt

Grundriss-Übersicht

Grundriss
 Masstab 1:100



- Legende:
- Br: = Brüstung
 - Sw: = Schwelle
 - St: = Sturz
 - F.F. = Fensterfläche
 - B.F. = Bodenfläche

