

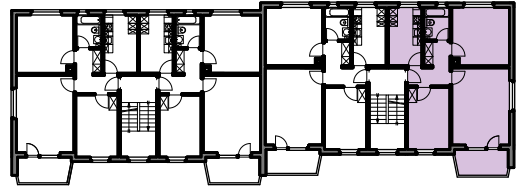
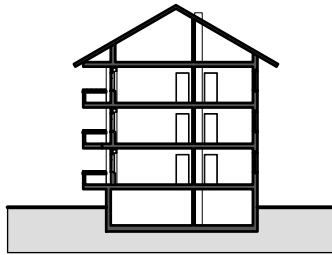
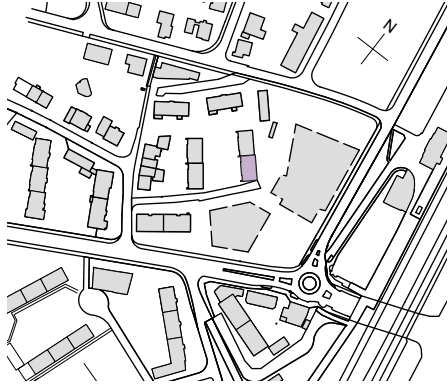
Liegenschaft WBG Bantiger, Siedlung Waldeck, 3072 Ostermündigen

Haus Waldeckstrasse 35 - Süd

Zimmer 3 Zimmer

Lage Hochparterre - 2. Obergeschoss

Fläche (NWF) 64.7 m<sup>2</sup> (exkl. Balkon)

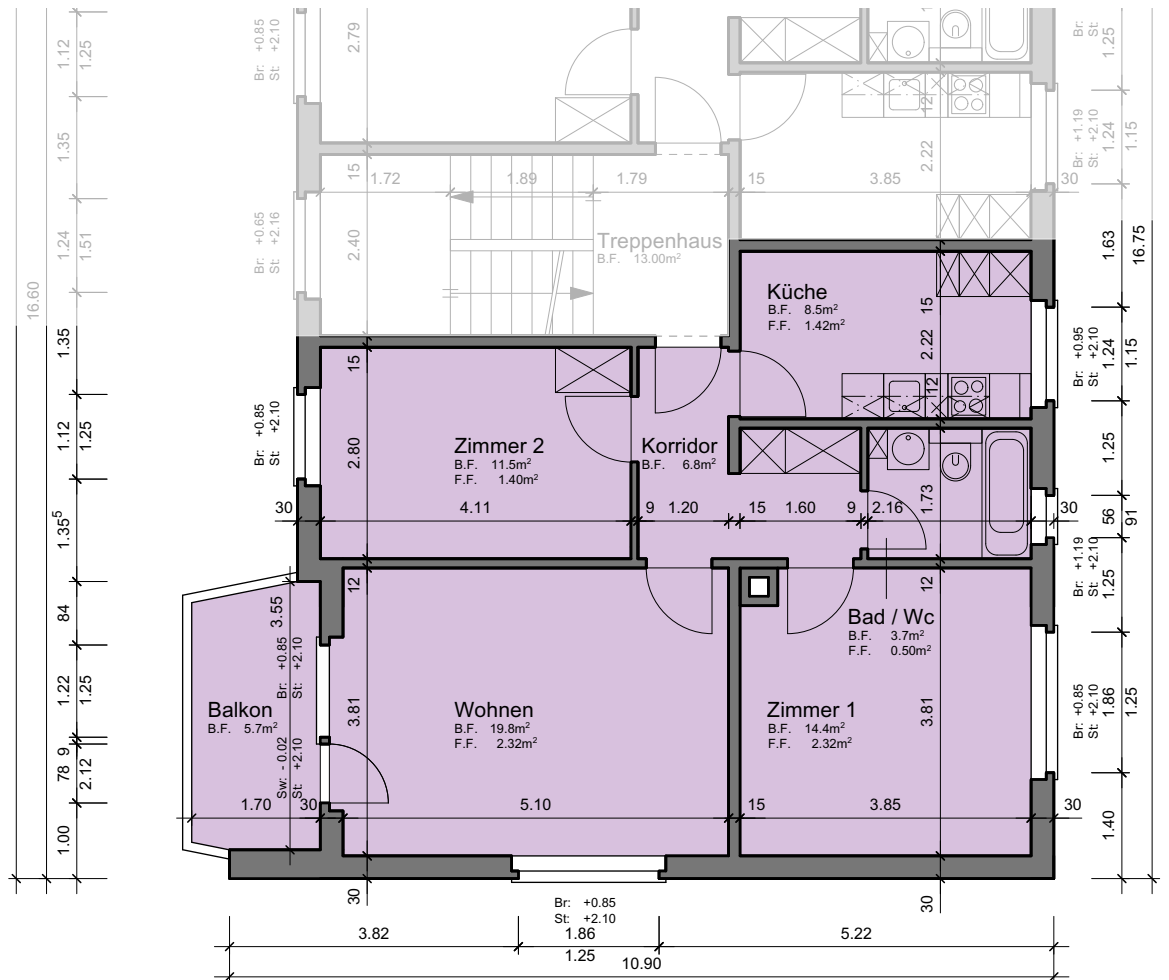


Situation

Schnitt

Grundriss-Übersicht

Grundriss  
Masstab 1:100



Legende:

- Br: = Brüstung
- Sw: = Schwelle
- St: = Sturz
- F.F. = Fensterfläche
- B.F. = Bodenfläche

