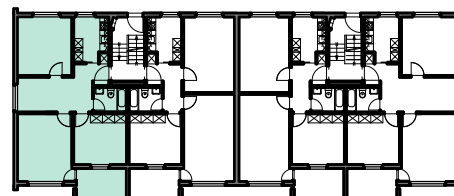
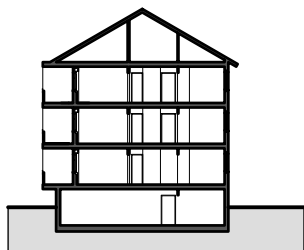
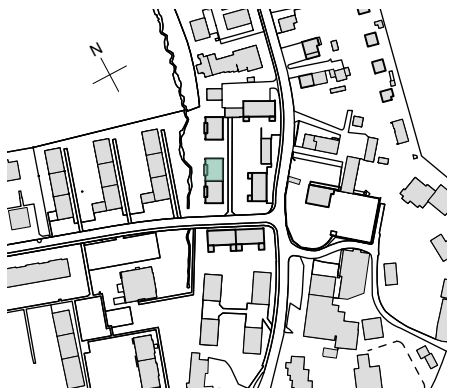


Liegenschaft	WBG Bantiger, Siedlung Wegmühle, 3072 Ostermündigen
Haus	Nobsstrasse 4 - Nord
Zimmer	3.5 Zimmer
Lage	Hochparterre - 2. Obergeschoss
Fläche (NWF)	67.1 m <sup>2</sup> (exkl. Balkon)

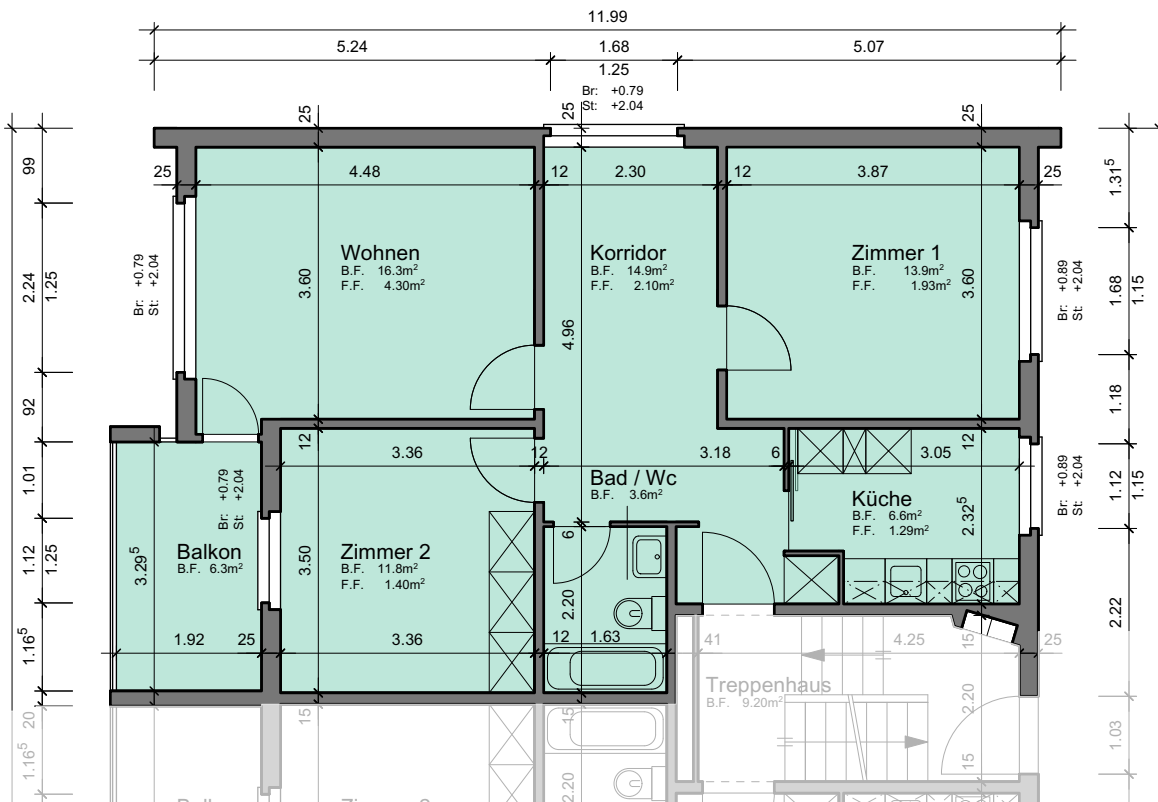


Situation

Schnitt

Grundriss-Übersicht

Grundriss  
 Masstab 1:100



- Legende:
- Br: = Brüstung
  - Sw: = Schwelle
  - St: = Sturz
  - F.F.: = Fensterfläche
  - B.F.: = Bodenfläche
  - HK: = Heizkörper

