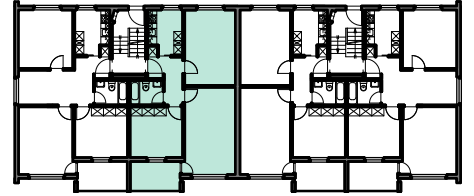
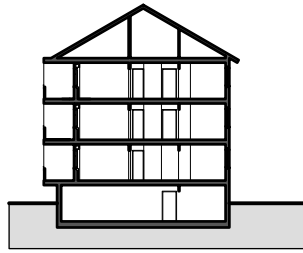
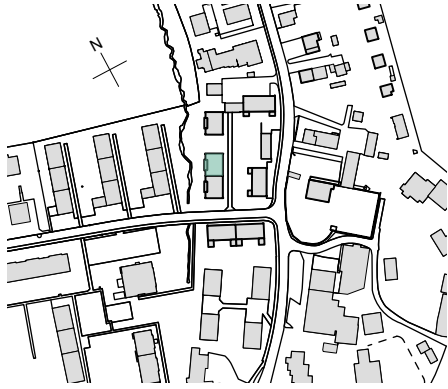


Liegenschaft	WBG Bantiger, Siedlung Wegmühle, 3072 Ostermündigen
Haus	Nobsstrasse 4 - Süd
Zimmer	3 Zimmer
Lage	Hochparterre - 2. Obergeschoss
Fläche (NWF)	64.6 m ² (exkl. Balkon)

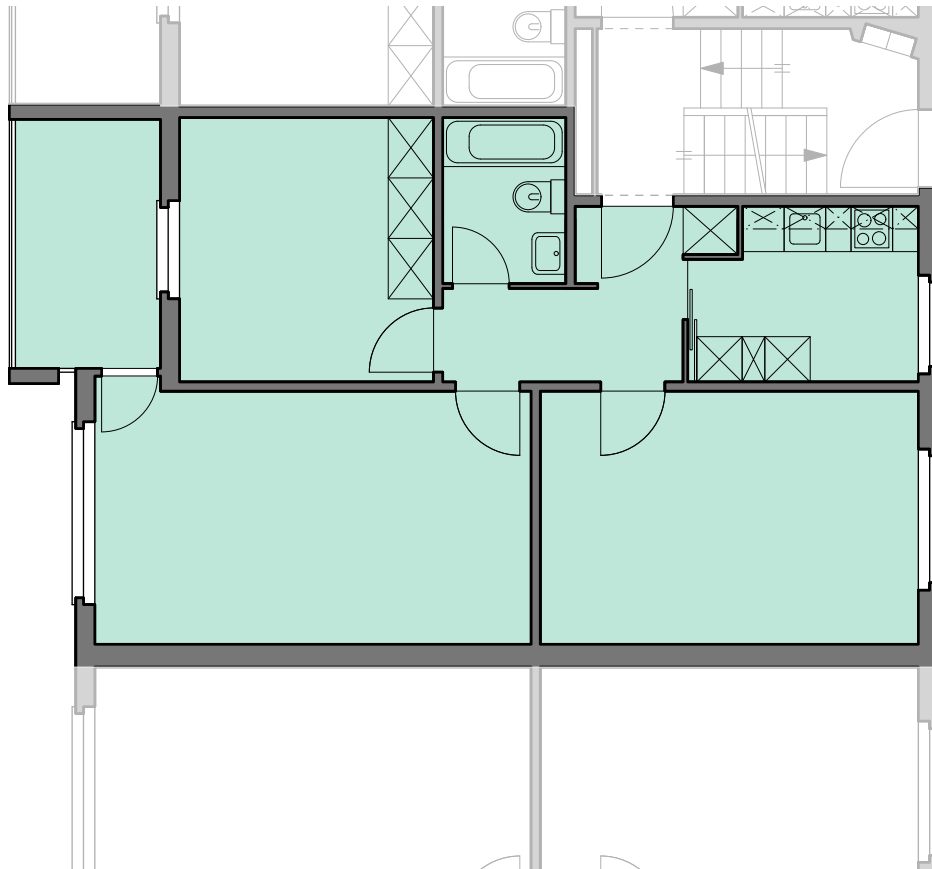


Situation

Schnitt

Grundriss-Übersicht

Grundriss
 Masstab 1:100



- Legende:
- Br: = Brüstung
 - Sw: = Schwelle
 - St: = Sturz
 - F.F. = Fensterfläche
 - B.F. = Bodenfläche
 - HK = Heizkörper

