

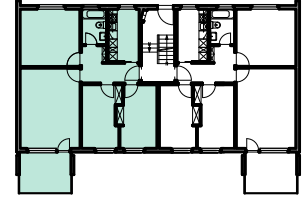
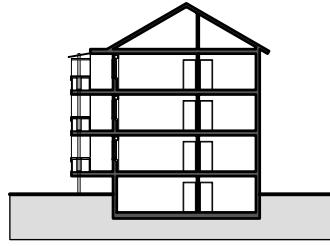
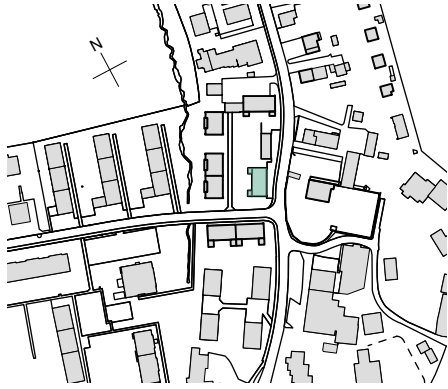
Liegenschaft WBG Bantiger, Siedlung Wegmühle, 3072 Ostermundigen

Haus Wegmühlegässli 11 - Nord

Zimmer 4 Zimmer

Lage Hochparterre - 2. Obergeschoss

Fläche (NWF) 74.8 m² (exkl. Balkon)

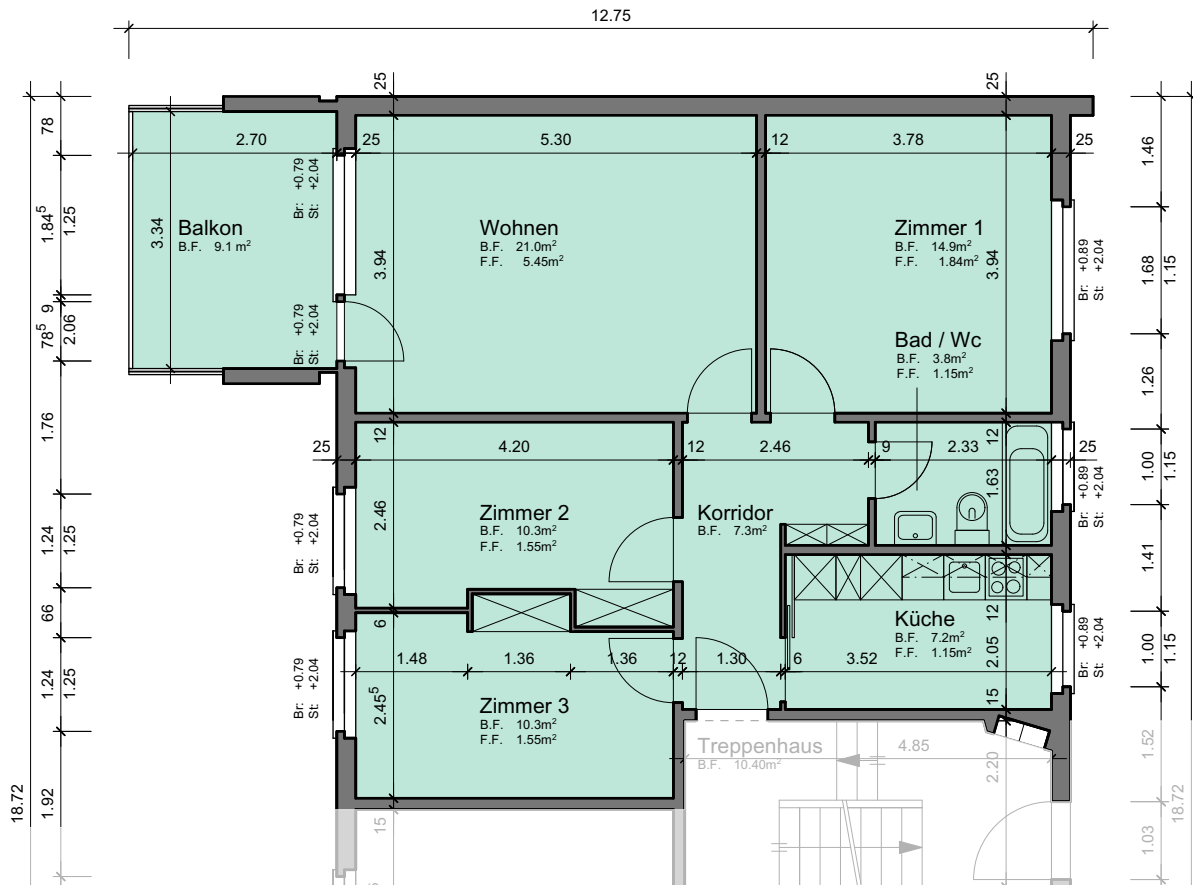


Situation

Schnitt

Grundriss-Übersicht

Grundriss
Masstab 1:100



- Legende:
- Br: = Brüstung
 - Sw: = Schwelle
 - St: = Sturz
 - F.F.: = Fensterfläche
 - B.F.: = Bodenfläche
 - HK: = Heizkörper

